

YEAR 2013

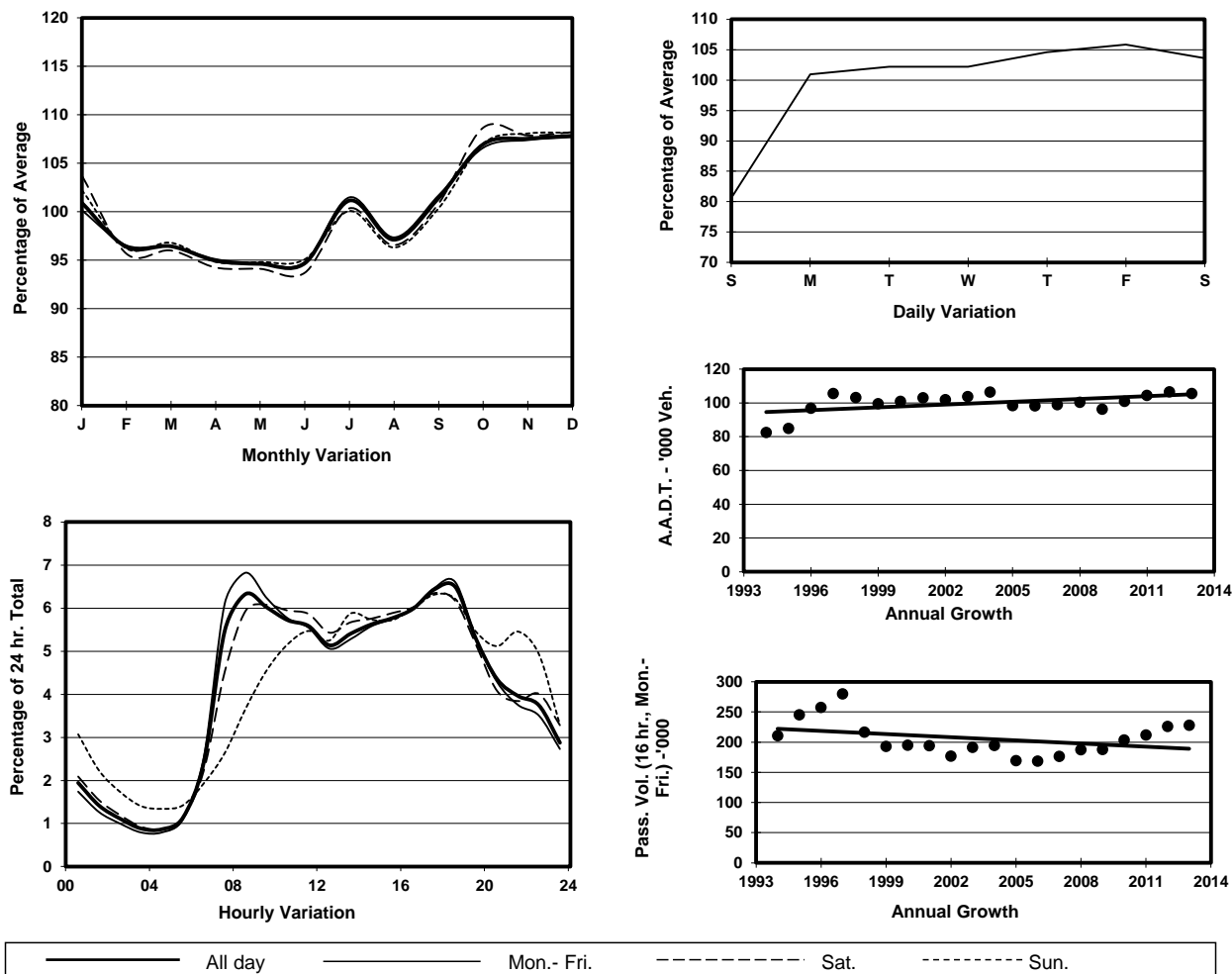
Location

Screenline Y-Y(Boundary between Tuen Mun & Yuen Long)

Stations on Cordon/Screenline

5025 and 6213

1. TRAFFIC FLOW VARIATION AND GROWTH



2. TRAFFIC CHARACTERISTICS (BY DIRECTION)

Parameter	All - Day	Mon. - Fri.	Sat.	Sun.
EAST BOUND				
A.A.D.T.	53990	56300	57020	43450
R 12 / 24 - %	70.4	71.7	70	62.7
R 16 / 24 - %	87.7	88.4	86.9	83.9
AM Peak Hour	0800-0900	0800-0900	0900-1000	0900-1000
One-way flow at AM peak hour	3420	3810	3630	2030
T - % (AM)	-	24	-	-
PM Peak Hour	1800-1900	1800-1900	1600-1700	1700-1800
One-way flow at PM peak hour	3480	3700	3580	2660
T - % (PM)	-	19.4	-	-
Prop.of commercial vehicles - 16 hr.	-	25.5	-	-
WEST BOUND				
A.A.D.T.	51490	53720	53300	42320
R 12 / 24 - %	69.6	70.7	69.3	62.5
R 16 / 24 - %	87	87.7	86.5	83.3
AM Peak Hour	0800-0900	0800-0900	0900-1000	0900-1000
One-way flow at AM peak hour	3260	3700	3080	1880
T - % (AM)	-	22.6	-	-
PM Peak Hour	1800-1900	1800-1900	1700-1800	1700-1800
One-way flow at PM peak hour	3370	3570	3440	2750
T - % (PM)	-	15	-	-
Prop.of commercial vehicles - 16 hr.	-	25.4	-	-

3. OTHER INFORMATION AND COMMENT

4. Vehicle classification and occupancy - Monday to Friday

Time		Class of vehicle									
		Motor Cycle	Private Car	Taxi	Private LB	PLB	Goods veh.		Non Fr. Bus	Fr. Bus	
							Light	M & H		SD	DD
0700-0800	Pro	1.8	29.9	14.2	0.9	3.5	22.7	19.2	6.2	0.3	1.3
	Ocp	1.0	1.4	2.1	4.3	6.7	1.5	1.1	5.5	14.0	21.1
0800-0900 Peak Hour	Pro	1.4	42.9	10.1	1.1	2.5	18.7	18.3	4.1	0.3	0.6
	Ocp	1.0	1.4	2.0	5.1	14.9	1.5	1.1	17.5	18.8	35.2
0900-1000	Pro	0.6	34.4	9.5	1.3	2.2	22.3	24.7	3.8	0.4	0.8
	Ocp	1.1	1.4	1.8	2.9	13.3	1.5	1.1	9.8	18.3	18.5
1000-1100	Pro	1.0	30.0	10.5	0.6	2.3	22.9	28.0	3.5	0.4	0.9
	Ocp	1.1	1.4	1.8	2.0	11.3	1.5	1.2	22.7	25.3	18.8
1100-1200	Pro	1.0	29.4	9.6	0.7	2.3	22.0	30.7	2.8	0.5	0.9
	Ocp	1.2	1.5	2.0	1.9	11.6	1.4	1.1	17.8	26.6	22.7
1200-1300	Pro	1.0	32.5	9.6	0.9	2.5	25.2	24.8	2.2	0.5	0.8
	Ocp	1.1	1.5	1.8	4.5	10.3	1.5	1.1	16.2	20.4	26.9
1300-1400	Pro	1.4	29.1	8.7	0.7	2.5	25.3	28.9	2.2	0.5	0.8
	Ocp	1.0	1.6	1.8	2.8	10.8	1.5	1.1	8.0	26.1	21.6
1400-1500	Pro	0.5	31.2	7.7	0.7	1.9	26.4	27.7	2.6	0.4	0.9
	Ocp	1.0	1.6	1.7	2.9	9.1	1.5	1.1	10.8	23.4	22.2
1500-1600	Pro	1.2	28.9	11.3	1.0	1.6	25.3	25.7	3.6	0.4	1.0
	Ocp	1.2	1.4	1.8	3.0	11.8	1.5	1.1	10.8	26.6	24.4
1600-1700	Pro	1.3	30.5	11.3	1.0	1.4	25.5	23.7	3.8	0.4	1.0
	Ocp	1.0	1.5	1.8	3.2	14.8	1.5	1.1	12.3	27.4	18.3
1700-1800	Pro	1.7	35.3	10.0	1.6	2.2	22.9	21.3	3.7	0.4	0.9
	Ocp	1.1	1.5	1.9	2.2	14.4	1.5	1.1	8.7	23.9	25.9
1800-1900	Pro	2.1	47.5	11.0	0.7	3.0	18.7	12.5	3.4	0.3	0.7
	Ocp	1.1	1.6	1.9	1.3	16.6	1.3	1.1	16.2	26.1	27.3
1900-2000	Pro	1.7	52.6	12.1	0.4	2.8	16.1	8.8	3.9	0.4	1.1
	Ocp	1.0	1.4	2.0	3.3	13.7	1.4	1.1	6.5	23.8	21.1
2000-2100	Pro	1.5	51.5	15.6	0.5	2.9	12.2	9.6	4.6	0.6	1.0
	Ocp	1.2	1.5	1.9	2.7	12.6	1.4	1.1	6.1	14.1	16.6
2100-2200	Pro	1.5	53.1	19.1	0.2	3.4	10.6	6.0	4.4	0.4	1.3
	Ocp	1.1	1.6	1.9	2.0	11.7	1.3	1.0	6.0	16.6	16.9
2200-2300	Pro	0.9	57.0	20.2	0.3	2.7	9.5	5.1	2.6	0.4	1.3
	Ocp	1.0	1.6	2.0	1.0	10.5	1.5	1.1	6.1	8.3	8.2
16 hours	Pro	1.3	37.6	11.5	0.8	2.5	21.0	20.4	3.6	0.4	0.9
	Ocp	1.1	1.5	1.9	3.0	12.2	1.5	1.1	11.2	21.8	21.5

Legend

- Pro.** Proportion of vehicles in % (Sum may not add up to 100% due to figure rounding)
- Ocp.** Average occupancy of vehicles
- M & H** Medium and Heavy